

ISSN 2356-4407



www.STIKI.ac.id

PROCEEDING

IC - ITECHS 2014

The 1st International Conference on Information Technology and Security

Malang, November 27, 2014

Published by:

Lembaga Penelitian dan Pengabdian pada Masyarakat

Sekolah Tinggi Informatika dan Komputer Indonesia



PROCEEDING
The 1st International Conference on
Information Technology and Security (IC-ITechs)
November 27, 2014

Editors & Reviewers:

Tri Y. Evelina, SE, MM Daniel
Rudiaman, S.T, M.Kom Jozua
F. Palandi, M.Kom

Layout Editor:

Eka Widya Sari

LEMBAGA PENELITIAN & PENGABDIAN KEPADA MASYARAKAT

Sekolah Tinggi Informatika & Komputer Indonesia (STIKI) – Malang

Website: itechs.stiki.ac.id E-mail: itechs@stiki.ac.id

PROCEEDING

The 1st International Conference on
Information Technology and Security (IC-ITechs)
November 27, 2014

ISSN 2356 - 4407

viii + 276 hlm; 21 X 29,7 cm

Reviewers & Editors:

Tri Y. Evelina, SE, MM
Daniel Rudiawan, S.T, M.Kom
Jozua F. Palandi, M.Kom

Layout Editor:

Eka Widya Sari

Published by:

LEMBAGA PENELITIAN & PENGABDIAN KEPADA MASYARAKAT
Sekolah Tinggi Informatika & Komputer Indonesia (STIKI) – Malang
Jl. Raya Tidar 100 Malang 65146, Tel. +62-341 560823, Fax. +62-341 562525
Website: itechs.stiki.ac.id E-mail: itechs@stiki.ac.id

GREETINGS

Head of Committee IC-Itechs

For all delegation participants and invited guest, welcome to International Conference on Information Technology and Security (IC-Itechs) 2014 in Malang, Indonesia.

This conference is part of the framework of ICT development and security system that became one of the activities in STIKI and STTAR. this forum resulted in some references on the application of ICT. This activity is related to the movement of ICT development for Indonesia.

IC-Itechs aims to be a forum for communication between researchers, activists, system developers, industrial players and all communications ICT Indonesia and abroad.

The forum is expected to continue to be held continuously and periodically, so we hope this conference give real contribution and direct impact for ICT development.

Finally, we would like to say thanks for all participant and event organizer who involved in the held of the IC-Itechs 2014. We hope all participant and keynote speakers got benefit from this conference.

LIST OF CONTENT

Implementation, Challenges, and Cost Model for Calculating Investment Solutions of Business Process Intelligence	1 – 8
<i>Arta M. Sundjaja</i>	
Bisecting Divisive Clustering Algorithm Based On Forest Graph	9 – 14
<i>Achmad Maududie, Wahyu Catur Wibowo</i>	
3D Interaction in Augmented Reality Environment With Reprojection Improvement on Active and Passive Stereo	15 – 23
<i>Eko Budi Cahyono, Ilyas Nuryasin, Aminudin</i>	
Traditional Exercises as a Practical Solution in Health Problems For Computer Users	24 -29
<i>Laurentius Noer Andoyo, Jozua Palandi, Zusana Pudyastuti</i>	
Baum-Welch Algorithm Implementation For Knowing Data Characteristics Related Attacks on Web Server Log	25 -36
<i>Triawan Adi Cahyanto</i>	
Lighting System with Hybrid Energy Supply for Energy Efficiency and Security Feature Of The Building	37 – 44
<i>Renny Rakhmawati, Safira Nur Hanifah</i>	
Interviewer BOT Design to Help Student Learning English for Job Interview	45 – 50
<i>M. Junus, M. Sarosa, Martin Fatnuriyah, Mariana Ulfah Hoesny, Zamah Sari</i>	
Design and Development of Sight-Reading Application for Kids	51 -55
<i>Christina Theodora Loman, Trianggoro Wiradinata</i>	

Pembuatan Sistem E-Commerce Produk Meubel Berbasis Komponen	66 – 74
<i>Sandy Kosasi</i>	
Crowd sourcing Web Model of Product Review and Rating Based on Consumer Behaviour Model Using Mixed Service-Oriented System Design	75 – 80
<i>Yuli Adam Prasetyo</i>	
Predict Of Lost Time at Traffic Lights Intersection Road Using Image Processing	81 – 88
<i>Yoyok Heru Prasetyo Isnomo</i>	
Questions Classification Software Based on Bloom’s Cognitive Levels Using Naive Bayes Classifier Method	89 – 96
<i>M. Fachrurrozi, Lidya Irfiyani Silaban, Novi Yusliani</i>	
A Robust Metahuiristic-Based Feature Selection Approach for Classification	97 – 102
<i>Aina Musdholifah, Erick</i>	
Building a Spatio-Temporal Ontology for Artifacts Knowledge Management	103 - 110
<i>Nurul Fajrin Ariyani, Daniel Oranova Siahaan</i>	
Decision Support on Supply Chain Management System using Apriori Data Mining Algorithm	111-117
<i>Eka Widya Sari, Ahmad Rianto, Siska Diatinari Andarawarih</i>	
Object Recognition Based on Genetic Algorithm With Color Segmentation	118-128
<i>Evy Poerbaningtyas, Zusana E. Pudyastuti</i>	

Developing Computer-Based Educational Game to Support Cooperative Learning Strategy	129-133
<i>Eva Handriyantini</i>	
The Use of Smartphone to Process Personal Medical Record by using Geographical Information System Technology	134-142
<i>Subari, Go Frendi Gunawan</i>	
Implementasi Metode Integer Programming untuk Penjadualan Tenaga Medis Pada Situasi Darurat Berbasis Aplikasi Mobile	143-148
<i>Ahmad Saikhu, Laili Rochmah</i>	
News Sentiment Analysis Using Naive Bayes and Adaboost.....	149-158
<i>Erna Daniati</i>	
Penerapan Sistem Informasi Akutansi pada Toko Panca Jaya Menggunakan <i>Integrated System</i>	159-163
<i>Michael Andrianto T, Rinabi Tanamal, B.Bus, M.Com</i>	
Implementation of Accurate Accounting Information Systems To Mid-Scale Wholesale Company	164-168
<i>Aloysius A. P. Putra, Adi Suryaputra P.</i>	
Conceptual Methodology for Requirement Engineering based on GORE and BPM.....	169-174
<i>Ahmad Nurulfajar, Imam M Shofi</i>	
Pengolahan Data Indeks Kepuasan Masyarakat (IKM) Pada Balai Besar Pengembangan Budidaya Air Tawar (BBPBAT) Sukabumi dengan Metode Weight Average Index (WAI)	175-182
<i>Iwan Rizal Setiawan, Yanti Nurkhalifah</i>	
Perangkat Lunak Keamanan Informasi pada Mobile Menggunakan Metode Stream dan Generator Cipher	183-189
<i>Asep Budiman Kusdinar, Mohamad Ridwan</i>	

<i>Analisis Design Intrusion Prevention System (IPS) Based Suricata ...</i> <i>Dwi Kuswanto</i>	190-193
Sistem Monitoring dan Pengendalian Kinerja Dosen Pada Proses Perkuliahan Berbasis <i>Radio Frequency Identification (RFID)</i> Di Lingkungan Universitas Kanjuruhan Malang	194-205
<i>Moh.Sulhan</i>	
Multiple And Single Haar Classifier For Face Recognition	206-213
<i>Go Frendi Gunawan, Subari</i>	
Sistem Penunjang Keputusan Untuk Menentukan Rangkaing Taraf Hidup Masyarakat Dengan Metode Simple Additive Weighting	214-224
<i>Anita, Daniel Rudiaman Sijabat</i>	
Optical Character Recognition for Indonesian Electronic Id-Card Image	225-232
<i>Sugeng Widodo</i>	
Active Noise Cancellation for Underwater Environment using Raspberry Pi	233-239
<i>Nanang syahroni, Widya Andi P., Hariwahjuningrat S, R. Henggar B</i>	
Implementasi Content Based Image Retrieval untuk Menganalisa Kemiripan Bakteri Yoghurt Menggunakan Metode Latent Semantic Indexing	240-245
<i>Meivi Kartikasari, Chaulina Alfianti Oktavia</i>	
Software Requirements Specification of Database Roads and Bridges in East Java Province Based on Geographic Information System	246-255
<i>Yoyok Seby Dwanoko</i>	
Functional Model of RFID-Based Students Attendance Management System in Higher Education Institution	256-262
<i>Koko Wahyu Prasetyo, Setiabudi Sakaria</i>	

<i>Assessment of Implementation Health Center Management Information System with Technology Acceptance Model (TAM) Method And Spearman Rank Test in Jember Regional Health</i>	263-267
Sustin Farlinda	
Relay Node Candidate Selection to Forwarding Emergency Message In Vehicular Ad Hoc Network	268-273
Johan Ericka	
<i>Defining Influencing Success Factors In Global Software Development (GSD) Projects</i>	274-276
Anna Yulianti Khodijah, Dr. Andreas Drechsler	

Functional Model of RFID-Based Students Attendance Management System In Higher Education Institution

Koko Wahyu Prasetyo, Setiabudi Sakaria

Sekolah Tinggi Informatika & Komputer Indonesia (STIKI Malang)

kwprasetyo@gmail.com, setiabudi@stiki.ac.id

ABSTRACT

The need of developing student attendance management system is driven due to the fact that the students' attendance records are one of the most important factors of their academic achievement. The conventional practice of managing the student attendance manually by pens and papers is considered as challenging tasks for most of the higher education institutions. This paper will propose a system functional model to manage the student attendance in a more efficient way by utilizing the RFID tags technology. The RFID technology is an automated identification and data collection technology. The ability of RFID tags to deliver accurate information in quicker way shall improve the efficiency to manage the students attendance data. The system model proposed in this paper will also consider the need of the academic administrative staff to have an integrated reporting function which are related to the student and the lecturer attendance records. The system functional models presented in this paper are developed in UML based on the approach of object-oriented system analysis and design.

Keywords: system modeling, UML, functional model, attendance system, RFID tags

INTRODUCTION

One of the main concerns of any academic organization is the improvement of students' academic performance in their respective classes, along with their extra co-curricular activities. Various researches have concluded that students' attendance records are one of the most important factors of their academic performance.

There is a tendency for students who attend classes more regularly to achieve better academic achievements[6]. Better attendance leads to higher retention rates, better academic marks, and more satisfying educational experience. It is generally found that some students do very well in their academic examinations, and some students do not. Students who do well are those who come to the class regularly, attend their classes properly, and are punctual in their sessions[5]. Results taken from another study have shown that attendance was a significantly better predictor of grade than any other factors such as age, prior education background or even gender [8].

Most lecturers and academic administrators have to come up with ideas to ensure a good participation from students, and make sure that the student-lecturer interaction is kept intact. The ideas may come in formats like surprise quizzes or extra credit in class[1].

In addition to those challenges, the attendances are often recorded manually by the lecturer and therefore may leads to personal errors. Using paper-based procedures are inefficient not only in attendance recording but also in administrative reporting. It will also require the management of the academic institution to provide a well-managed filing system to contain the attendance records[9]. This indicates the need for a more efficient and effective method of solving the problem. One of technology implementation that can help to solve this

problem is by combining attendance management system and the RFID (Radio Frequency Identification) technology.

RFID is an automated identification and data collection technology which ensures more accurate and timely data entry. It gains more attention recently because of its current low cost and advanced uses in other computing fields[1]. RFID combines radio frequency and microchip technologies to create a system that can be used to identify, monitor, and secure objects. RFID systems use tiny chips called tags which can contain and transmit some identifying information to an RFID reader or scanner. It can be used for retrieving from or storing data on to RFID tags without any physical contact[7].

The ability of RFID systems to deliver precise and accurate data about tagged items will improve efficiency and bring other benefits to business community and consumers alike[2].

METHOD

Object-oriented approaches to developing information systems can use any of the traditional methodologies. However, the object-oriented approaches are most associated with a phased development methodology. The primary difference between a traditional approach like structured design and an object-oriented approach is how a problem is decomposed[4].

In traditional approaches, the problem decomposition process is either process centric or data centric. However, processes and data are so closely related that it is difficult to pick one or the other as the primary focus. Based on this lack of clarity, object-oriented methodologies attempt to balance the emphasis between process and data by focusing the decomposition of problems on objects that contain both data and processes[3].

UML (Unified Modeling Language) is made up of a variety of modeling techniques, dealing with various aspects of the system development. Following UML's popularity and widespread adoption, many object-oriented development methodologies which utilize its techniques have been developed in recent years. This paper use a methodology proposed by Whitten and Bentley[11] which deals with the system analysis and design phases.

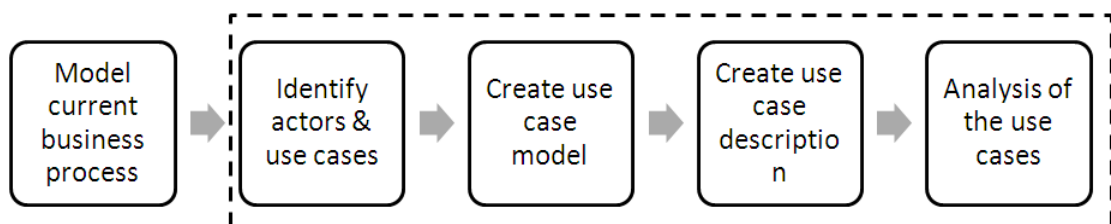


Figure 1: Steps to create system functional models

The first step in the methodology is modeling the current business processes. After then, the current business process model is used to facilitate functional model creation. The functional model is created with use cases models which describe the system's functions from the users' point of view. Functional model creation involves four sub-steps[10]: identifying actors and use cases, creating a use case model, creating the use case description, and analysis of the use cases.

This research uses STIKI Malang as the observation object. STIKI is a private IT college located in Malang, Indonesia,. The system models presented in this article are based on analysis and design of the organization's business processes.

RESULTS

The students' attendance management activity of the organization is currently performed manually by paper forms. This practice consumes a lot of time and also prone to human errors that could be happening during or after the process of attendance recording. The process becomes more complicated for the academic administrators to summarize the attendance records and deliver the reports required by management board.

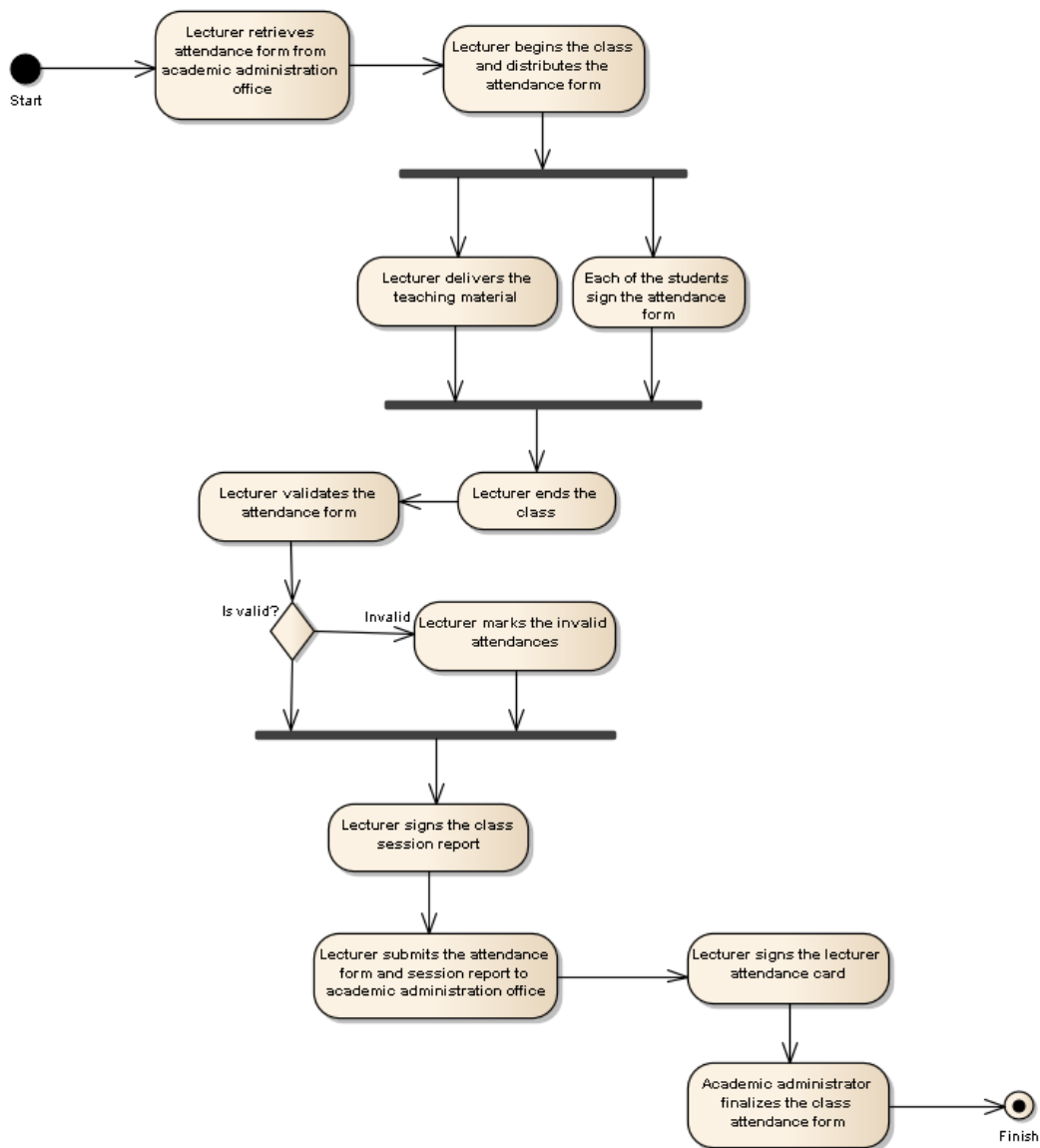


Figure 2: Manual attendance management activity model

Potential actors and use-cases for the new attendance management system could now be analyzed from the current attendance management activity model produced in the first step. The identified main actors based on the current process are lecturers, students, and academic administrators.

Table 1: Identified actors and use-cases

Potential actors	Potential use-cases
Lecturers	Open the class session. In some cases, students can also act as lecturer-assistant
	Validate the attendance report forms and mark any invalid attendances
	Close the class session and submit the class session report
	Sign the lecturer attendance form
Students	Sign the class attendance form
Academic administrator	Re-validate and authorize the class attendance report forms
	Summarize students attendance and produce reports
	Summarize lecturers attendance and produce reports

The identified actors and use-cases are then used to produce the use-case model of the proposed system. Additional actor is introduced to deal with administrative tasks of the proposed system, such as system users and privileges management.

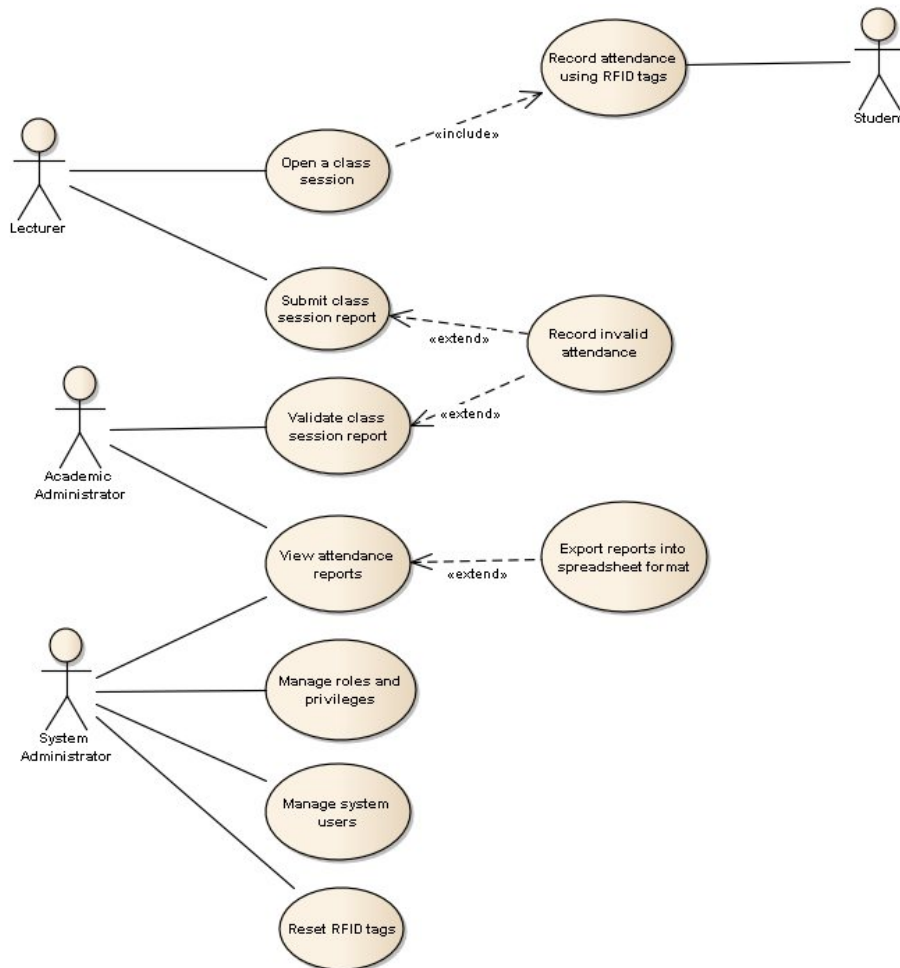


Figure 3: Attendance management system use-cases model

The use-cases presented in the model are then analyzed to produce brief description on how the use-cases will be implemented for the proposed system. The use-case analysis results are presented in use-case description format. Use-case description contains the additional information to allow users understand the model in a simpler way. Use case description has

three basic parts: overview information, relationships, and the flow of events. This article presents every use-case descriptions which are considered to have high level of importance.

Table 2: Use-case description - recording the attendance

Use-case Name	Record attendance by using RFID tags
Primary actor	Student
Level of importance	High
Brief description	Student is able to record his attendance by using his own RFID tag. System reads the RFID tag to populate the student identity and the attendance time into the database.
Relationship	Association: Student
	Includes: none
	Extends: none
Trigger	Class session has been opened by lecturer
Flow of events	<ol style="list-style-type: none"> 1. Lecturer opens the class 2. System will populate class session record 3. Each of students record their attendance by using RFID tags 4. System will populate student's identity and time stamp

Table 3: Use-case description - submit session report

Use-case Name	Submit class session report
Primary actor	Lecturer
Level of importance	High
Brief description	After closing the class session, the lecturer must submit the class session report. The report contains the session description, the teaching methods, and any additional notes related to the teaching activities.
Relationship	Association: Lecturer
	Includes: none
	Extends: none
Trigger	Class session has been closed by lecturer
Flow of events	<ol style="list-style-type: none"> 1. Lecturer closes the class 2. Lecturer fill in the session report form 3. System store the class session records 4. System records lecturer's identity and time stamp

Table 4: Use-case description - view class attendance report

Use-case Name	View class attendance report
Primary actor	Academic administrator
Level of importance	High
Brief description	Academic administrator is able to view the attendance reports. The reports are produced from session attendance records that have been validated and authorized. Academic administrator could also view customized reports based on provided filters and criterias.
Relationship	Association: Academic administrator
	Includes: none
	Extends: Export reports into spreadsheet format
Trigger	Attendance report and session report have been authorized
Flow of events	<ol style="list-style-type: none"> 1. Academic administrator provides required filters and criterias 2. System displays the report based on provided criterias 3. Academic administrator can export the report into spreadsheet format

Table 5: Use-case description - manage roles and privileges

Use-case Name	Manage roles and privileges
Primary actor	System administrator
Level of importance	High
Brief description	System administrator is able to manage assign roles and privileges to the users recorded in the system. Any users can be assigned into 4 different roles as defined in use-case actors.
Relationship	Association: System administrator
	Includes: none
	Extends: none
Trigger	-
Flow of events	<ol style="list-style-type: none"> 1. System administrator activate the administration module 2. System displays every available users 3. System administrator assign a role to selected users 4. System grants defined privileges for the assigned users

The produced use-cases and their descriptions can then be used as foundation for upcoming design phase. The use-case communicates what the system needs to do at a high level, and all the subsequent modeling techniques are built on this. The use-case model and its descriptions are the building blocks by which the system is designed and built.

CONCLUSION

This article presents the functional model of an attendance management system based on higher education institution's business process. The system allows lecturers and students to simply record their attendance just by moving their RFID tags near the scanner device. The

primary actors identified for the system are lecturers, students, academic administrators, and system administrators.

The main benefit of the proposed RFID-based attendance management system is to shorten the attendance recording activities and also reduce the hassle of managing attendance records. The system is also aiming to help the academic administrators and management boards to provide any attendance reports based on certain set of criterias.

The set of functional models presented in this article can be next used to produce the behavioral model and structural model of a RFID-based attendance management system. The models can then be implemented by using any programming language that endorse the object-oriented programming approach.

REFERENCE

- [1] Arulogun OT, Olatunbosun A, Fakolujo OA, Olaniyi OM. *RFID-Based Students Attendance Management System*. International Journal of Scientific & Engineering Research 2013; 4 (2).
- [2] Bardaki C, Kourouthanassis P, Pramataris K. *Deploying RFID-Enabled Services in the Retail Supply Chain: Lessons Learned toward the Internet of Things*, Information Systems Management 2012; p233-245; 29 (3).
- [3] Booch G, Rumbaugh J, Jacobson I. *The Unified Modeling Language User Guide*. Addison Wesley Professional. 2005; 2nd ed.
- [4] Dennis A, Wixom B, Tegarden D. *System Analysis and Design UML Version 2.0: An Object-oriented Approach*. John Wiley & Sons. 2012; 4th ed.
- [5] Kumar N, El Zoghbi NB. *Improving Academic Performance Through Online Realtime Attendance Monitoring: A Case Study At Al Fateh University*. Proceedings of the 4th National Conference INDIACom 2010.
- [6] Muir J. *Student Attendance: Is It Important, and What Do Students Think?* Transactions 2009; p50-69; 6 (2).
- [7] Nainan S, Parekh R, Shah T. *RFID Technology Based Attendance Management System*. International Journal of Computer Science Issues, January 2013; 10 (1).
- [8] Newman-Ford LE, Lloyd S, Thomas SL, *An Investigation Into The Effects Of Gender, A-Level Points, Place Of Residence, Age And Attendance On First Year Undergraduate Attainment*. Journal of Applied Research in Higher Education, 2009; p13-28; 1 (1).
- [9] Othman M, Ismail SN, Raus MI. *The Development of the Web-based Attendance Register System (ARS) for Higher Academic Institution: From Feasibility Study to Design Phase*. International Journal of Computer Science and Network Security, 2009; p203-208; 9 (10).
- [10] Shoval P. *Functional and Object-oriented Analysis and Design: An Integrated Methodology*. Idea Hill Publishing, 2007.
- [11] Whitten J, Bentley L. *System Analysis and Design Methods*. McGraw-Hill Irwin, 2007; 7th ed.